



**India Meteorological Department  
(Ministry of Earth Sciences)**

**NATIONAL BULLETIN NO. 1 (BOB/10/2022)**

**TIME OF ISSUE: 1245 HOURS IST**

**DATED: 22.12.2022**

**FROM: INDIA METEOROLOGICAL DEPARTMENT (FAX NO. 24643965/24699216/24623220)**

**TO: CONTROL ROOM, NDM, MINISTRY OF HOME AFFAIRS (FAX.NO. 23093750)**

**CONTROL ROOM NDMA (FAX.NO. 26701729)**

**CABINET SECRETARIAT (FAX.NO.23012284, 23018638)**

**PS TO HON'BLE MINISTER FOR S & T AND EARTH SCIENCES (FAX NO.23316745)**

**SECRETARY, MOES (FAX NO. 24629777)**

**H.Q. (INTEGRATED DEFENCE STAFF AND CDS) (FAX NO. 23005137/23005147)**

**DIRECTOR GENERAL, DOORDARSHAN (23385843)**

**DIRECTOR GENERAL, AIR (23421105, 23421219)**

**PIB MOES (FAX NO. 23389042)**

**UNI (FAX NO. 23355841)**

**D.G. NATIONAL DISASTER RESPONSE FORCE (NDRF) (FAX NO. 26105912, 2436 3260)**

**DIRECTOR, PUNCTUALITY, INDIAN RAILWAYS (FAX NO. 23388503)**

**CHIEF SECRETARY, TAMIL NADU (FAX NO 044-25672304)**

**CHIEF SECRETARY, ANDHRA PRADESH (FAX NO. 0863-2441029, 08645-246600)**

**CHIEF SECRETARY, PUDUCHERRY (FAX NO 0413-2334145)**

**ADMINISTRATOR, ANDAMAN & NICOBAR ISLANDS (FAX NO. 03192- 232656)**

**CHIEF SECRETARY, KARNATAKA (FAX NO. 080-22258913)**

**CHIEF SECRETARY, KERALA (FAX NO. 0471-2327176)**

**ADMINISTRATOR, LAKSHADWEEP ISLANDS (FAX NO. 0413-262184)**

**Sub: Depression over Southwest and adjoining southeast Bay of Bengal**

Latest observations indicate that yesterday's Well Marked Low Pressure Area over southwest Bay of Bengal and adjoining Equatorial Indian Ocean moved north-northwestwards and concentrated into a depression at 0830 hours IST of today, the 22<sup>nd</sup> December over southwest and adjoining southeast Bay of Bengal near latitude 9.0°N and longitude 85.0°E about 420 km east-northeast of Trincomalee (Sri Lanka), 600 km south-southeast of Nagappattinam (Tamil Nadu) and 690 km southeast of Chennai (Tamil Nadu).

It is likely to continue to move north-northwestwards during next 24 hours and thereafter gradually recurve west-southwestwards towards Comorin Area across Sri Lanka during subsequent 48 hours.

**Warnings:**

**Rainfall warning (Graphics enclosed)**

- Light to moderate rainfall at many places with heavy rainfall at isolated places is likely over south coastal Tamil Nadu on 25<sup>th</sup> & 26<sup>th</sup> December 2022.
- Light to moderate rainfall at a few places with heavy rainfall at isolated places is likely over south Kerala on 26<sup>th</sup> December 2022.

**Wind warning (Graphics enclosed):**

**Southwest Bay of Bengal along & off Tamil Nadu and Sri Lanka coasts:**

Squally wind speed reaching 45-55 kmph gusting to 65 kmph is likely to prevail till 25<sup>th</sup> December morning becoming 40-50 kmph gusting to 60 kmph till 26<sup>th</sup> morning and decrease thereafter.

**Adjoining areas of southeast & westcentral Bay of Bengal:**

Squally weather with wind speed reaching 40-50 kmph gusting to 60 kmph is likely to prevail till 24<sup>th</sup> December morning and decrease thereafter.

**Gulf of Mannar and Comorin Area along & off south Tamil Nadu & west Sri Lanka coasts:**

Squally weather with wind speed reaching 40-50 kmph gusting to 60 kmph is likely to prevail on 24<sup>th</sup> December becoming squally wind speed reaching 45-55 kmph gusting to 65 kmph during 25<sup>th</sup> and 26<sup>th</sup> December.

**Sea condition:**

**Southwest Bay of Bengal along & off Tamil Nadu and Sri Lanka coasts:**

Sea condition is likely to be rough to very rough till 26<sup>th</sup> December morning and improve thereafter.

**Adjoining areas of southeast & westcentral Bay of Bengal:**

Sea condition is likely to be rough till 24<sup>th</sup> December morning and improve thereafter.

**Gulf of Mannar and Comorin Area along & off south Tamil Nadu & west Sri Lanka coasts:**

Sea condition is likely to be rough to very rough during 25<sup>th</sup> and 26<sup>th</sup> December.

**Fishermen are advised not to venture into**

(b) Southwest Bay of Bengal and along & off Sri Lanka coast during 22<sup>nd</sup> – 25<sup>th</sup> December.

(c) Gulf of Mannar and Comorin Area along & off south Tamil Nadu and west Sri Lanka coasts during 23<sup>rd</sup>-26<sup>th</sup> December.

**The System is continuously monitored and next bulletin will be issued at 1430 hours IST of today, the 22<sup>nd</sup> December, 2022.**

**(Ananda Kumar Das)**

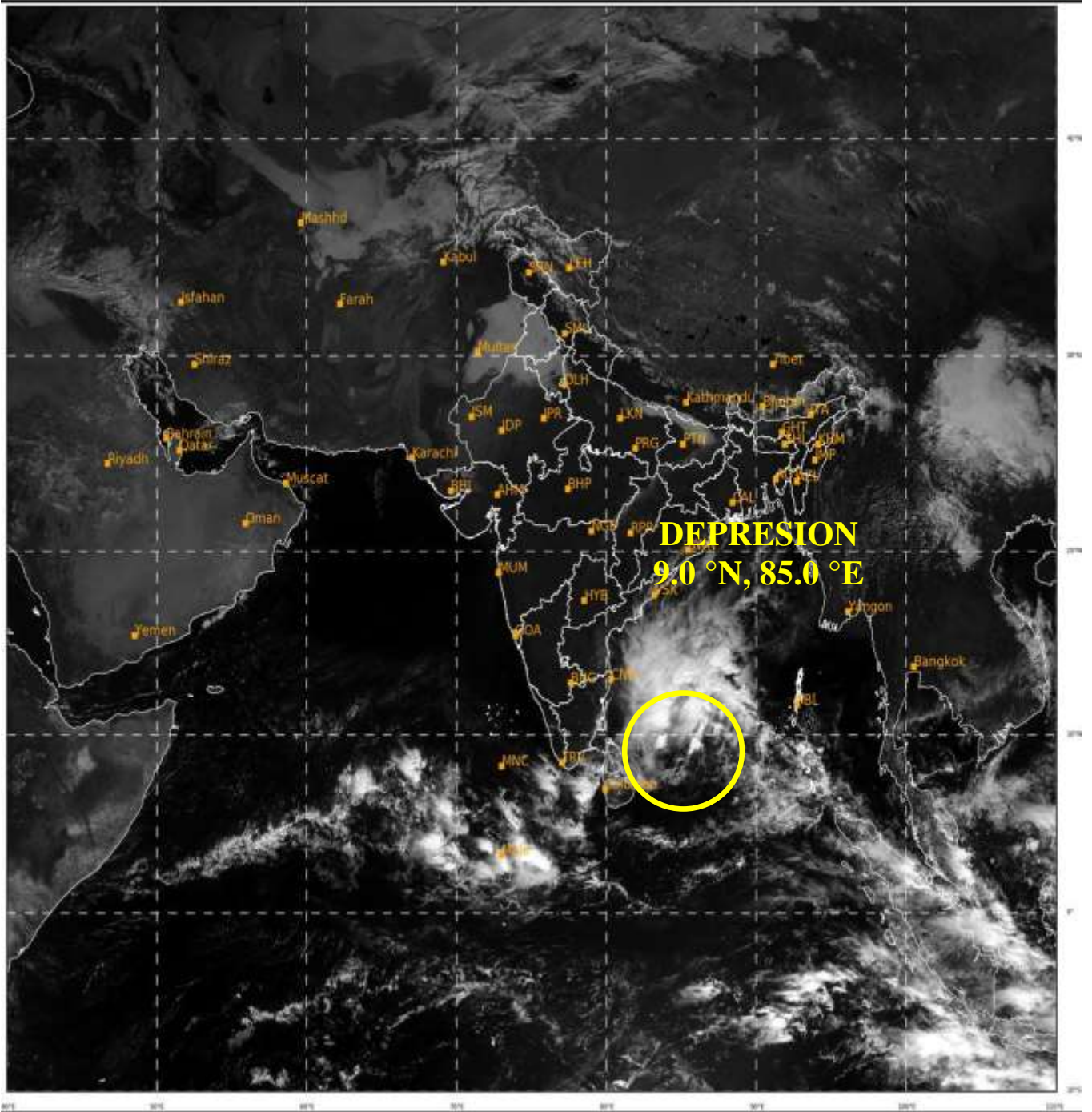
**Scientist E, Cyclone Warning Division, New Delhi**

*Copy to: ACWC Mumbai & Chennai / CWC Ahmedabad / CWC Thiruvananthapuram / MC Goa*

**LEGEND: Heavy Rainfall:** 64.5 to 115.5mm, **Very Heavy Rainfall:** 115.6 to 204.4mm **Most Places:** more than 76% of total stations, **Isolated Places:** Less than 25% of total

SAT : INSAT-3D IMG  
Visible Count 0.65 um  
LIC Mercator

22-12-2022/(0600 to 0627) GMT  
22-12-2022/(1130 to 1157) IST



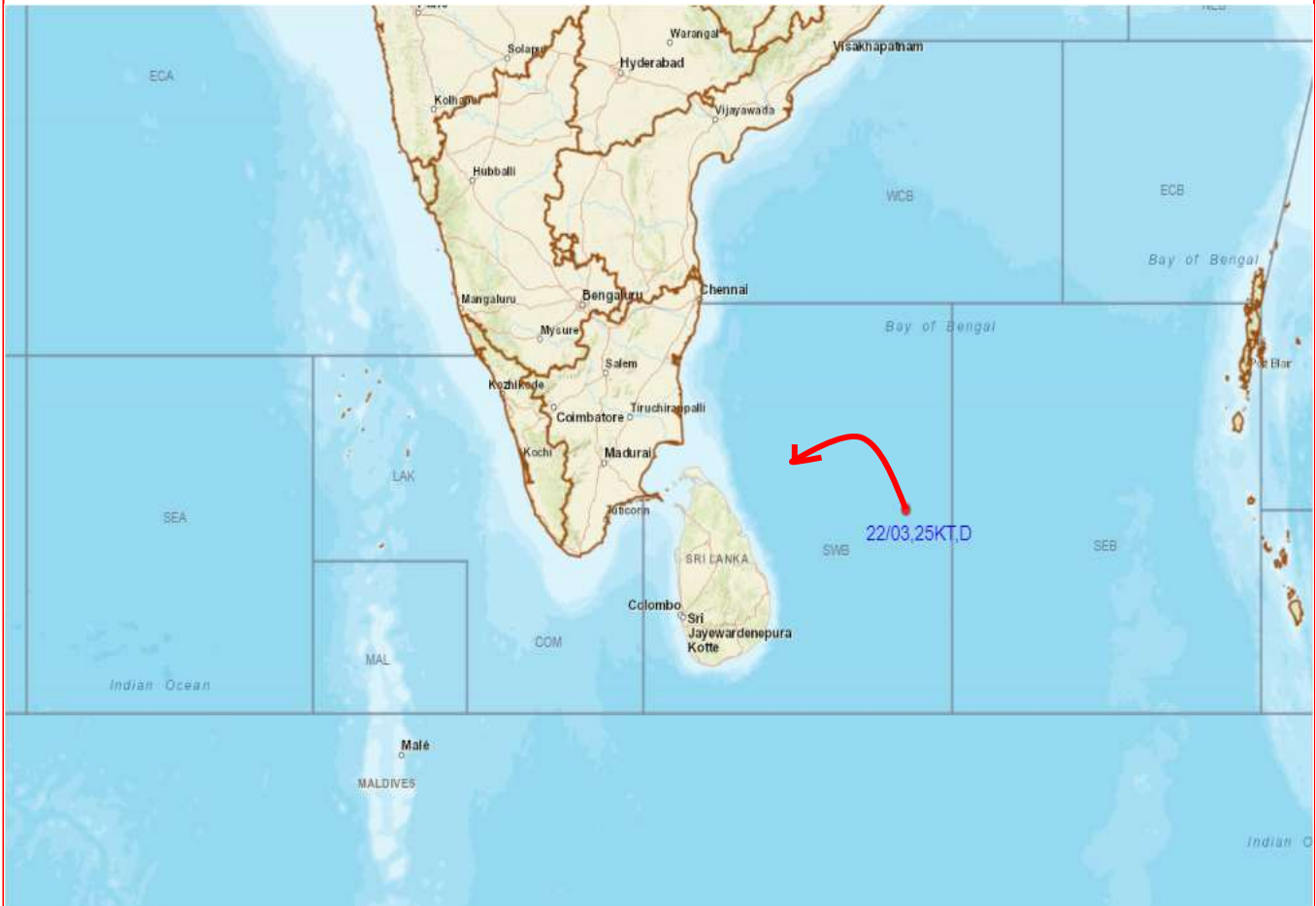
14

337

IMD, DELHI



## OBSERVED AND FORECAST TRACK OF DEPRESSION OVER SOUTHWEST AND ADJOINING SOUTHEAST BAY OF BENGAL BASED ON 0300 UTC OF 25<sup>TH</sup> DECEMBER, 2022



DATE/TIME IN UTC  
IST=UTC + 0530  
L: LOW PRESSURE AREA  
WML: WELL MARKED LOW PRESSURE AREA  
D: DEPRESSION (17-27 KT)  
DD: DEEP DEPRESSION (28-33 KT)  
CS: CYCLONIC STORM (34-47 KT)  
SCS: SEVERE CYCLONIC STORM (48-63KT)  
VSCS: VERY SEVERE CYCLONIC STORM (64-89 KT)  
ESCS: EXTREMELY SEVERE CYCLONIC STORM (90-119 KT)  
SuCS: SUPER CYCLONIC STORM (≥ 120 KT)

-  LESS THAN 34 KT
-  34-47 KT
-  ≥ 48 KT
-  OBSERVED TRACK
-  FORECAST TRACK
-  CONE OF UNCERTAINTY

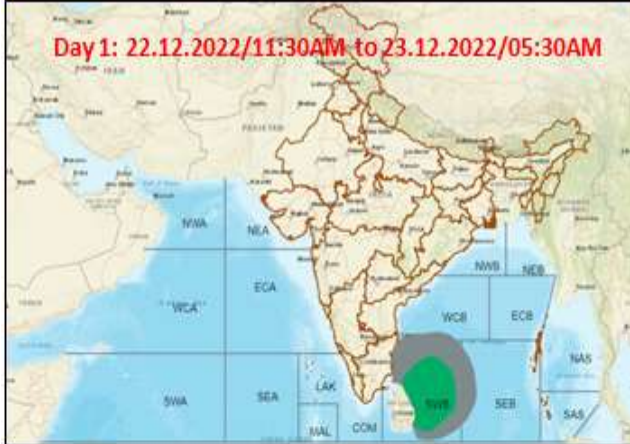




- |              |            |              |              |
|--------------|------------|--------------|--------------|
| Heavy Rain   | Heavy Snow | Thunderstorm | Dust Storm   |
| Strong Winds | Visibility | Cyclone      | Squall/ Hail |
| Frost        | Cold Wave  | Heat Wave    | Sea State    |

## Fishermen warning graphics

Day 1: 22.12.2022/11:30AM to 23.12.2022/05:30AM



Day 2: 23.12.2022/05:30AM to 24.12.2022/05:30AM



Day 3: 24.12.2022/05:30AM to 25.12.2022/05:30AM



Day 4: 25.12.2022/05:30AM to 26.12.2022/05:30AM



Day 5: 26.12.2022/05:30AM to 27.12.2022/05:30AM



Squally WX with wind speed 40-50 kmph gusting to 60 kmph

Squally wind speed 45-55 kmph gusting to 65 kmph

**Fishermen are advised not to venture into the marked areas.**